

APPLICATION:

PRODUCT NAME:

DIPPERWELL SINK ASSEMBLY

JOB NAME:

_____ SPECIAL CONFIGURATION
(CHECK BASE MODEL AND OPTIONS)

QUANTITY:

ITEM NO.:

MODEL:

■ 3043

OPTIONS OR MODIFICATIONS:

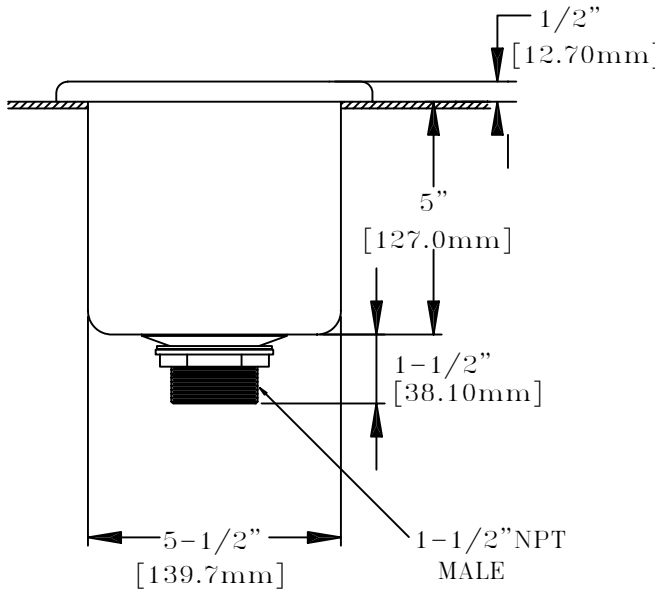
OTHER _____

FEATURES:

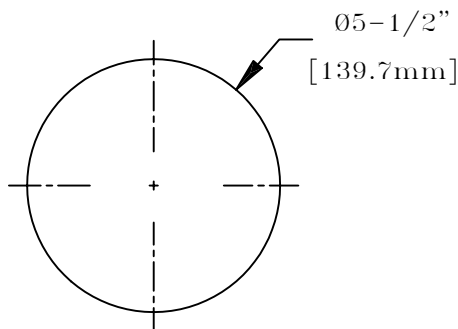
- * STAINLESS STEEL PAN
- * REMOVABLE INNER SHELL

SHIPPING WEIGHT

* 2.0 LB



ROUGH-IN:



ANSI/A112.18.1M, ANSI/NSF 61.9

FISHER

FISHER MANUFACTURING COMPANY
TOLL FREE: 800-421-6162 - FAX: 800-832-8238
information@fisher-mfg.com - www.fisher-mfg.com